

## Chair's column

by Jennifer Winyard, National Chair

One of the privileges of my role is having an insight into all the great work so many of you are doing in our core areas of Outreach, Inclusion and Mentoring.

These are all fundamentally important to our organisation, not only the specific projects our volunteers are involved in, but the ethos of 'giving back' that they engender. Encouraging others to aspire, succeed and inspire is at the heart of what we do and feeds the collaboration and friendships among our members.

I have been a member for nearly 18 years. I joined because at that time, early in my career, I wanted to build my network, with people who shared similar interests, understood the issues and wanted to help tackle them. I was also passionate about encouraging girls and young women to consider a career in the industry, so got involved in the first

National Student Awards and started volunteering for what were then called our Education Roadshows. This was all about unlocking potential – still a major focus for me, as evidenced through my National Chair theme this year.

In this edition we have a piece on some of the Outreach work underway across the UK; we take a look at the Regional Student Awards and, with the National Best of the Best Final coming up at Claridge's on 19th September, find out who this year's national finalists are. Thank you to everyone involved in all these initiatives. You're all doing amazing work which has such a positive impact on so many people.



**Jennifer Winyard**  
National Chair of Women in Property

## What do you think?



Members will recently have received an email invitation to respond to our Member Consultation, which is open until 11th September. This is your opportunity to give us your views on what we do and how we do it, as well as feedback on elements of the industry, so we urge you to take part. If you've not done so already, you can take the survey [here](#).

**National Student Awards**

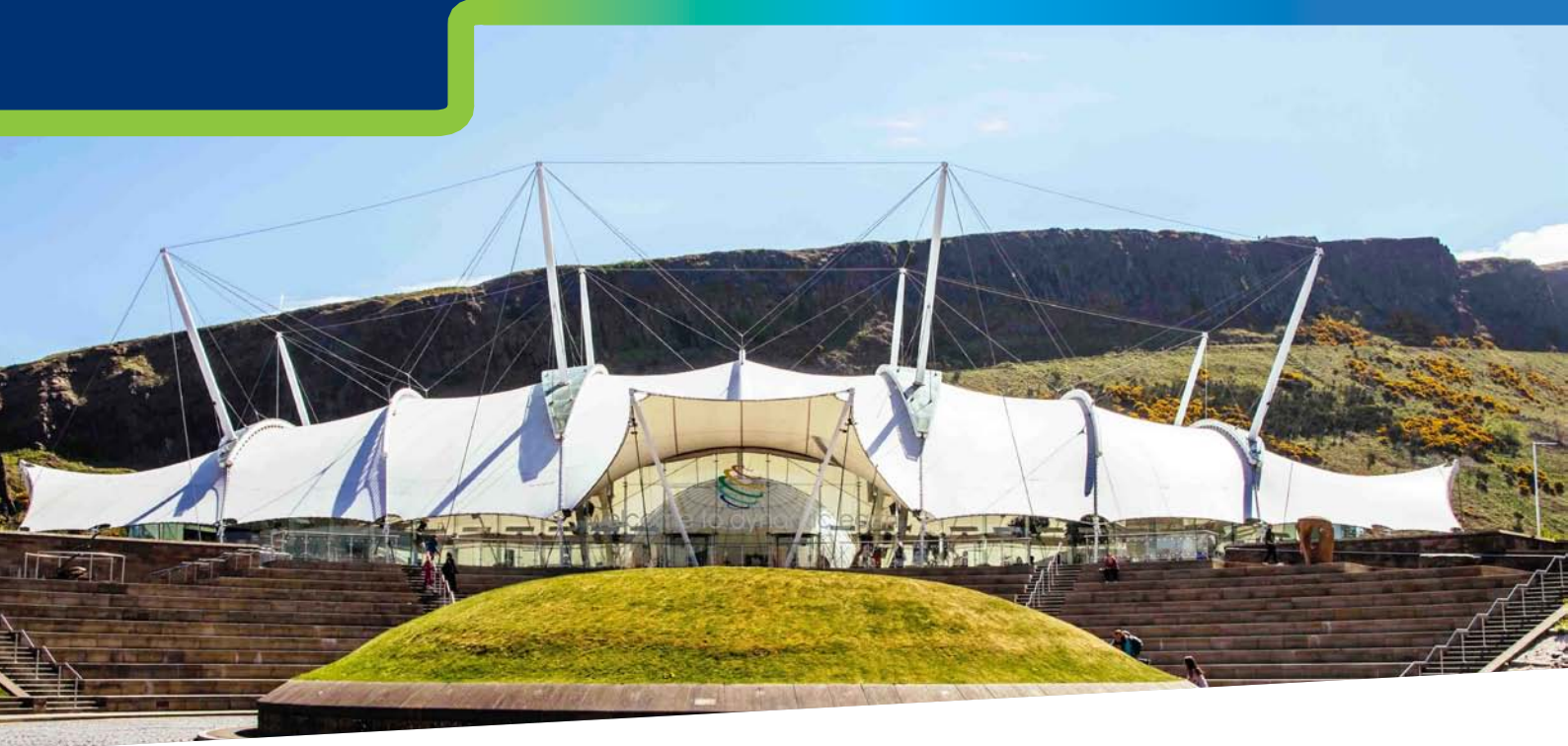
Sponsored by:

**amazon**



**tp bennett**

# Join us at the Summit #PIPbyWiP



The countdown is on. In just four months, delegates from all over the country - members and non-members alike - will come together at Dynamic Earth in Edinburgh for the People-Innovation-Place Summit, Women in Property's national conference that is open to all. Hosted by the

Central Scotland branch, the Summit is the first of its kind and is gearing up to be fantastic. The PIP team have got everything covered from content to site visits, networking to catering and marketing, all in close collaboration with the National team.

## Thank you to our sponsors

**We celebrate our sponsors who are demonstrating their commitment to equity, diversity and inclusion through their support of Women in Property. Thank you!**

Headline sponsor



"McLaughlin & Harvey is delighted to be the headline sponsor of the People-Innovation-Place Summit which is coming to Scotland this year. Supporting this summit continues our involvement with WiP and our shared aim of creating a more balanced, diverse and inclusive built environment sector. We look forward to collaborating with attendees on the theme of 'Rethinking Places' at Dynamic Earth, Edinburgh in November."

**Martin Smith,**  
Pre-Construction Director

Gold sponsors



Silver sponsors



Breakfast Reception

Drinks Reception



The People-Innovation-Place Summit provides a fantastic opportunity to showcase your brand and products to conference attendees. We still have a Silver sponsorship available, as well as exhibition stand opportunities. If you'd like to hear more, please contact [hannah.lloyd@scottishlandandestates.co.uk](mailto:hannah.lloyd@scottishlandandestates.co.uk)





# People Innovation Place Summit

Hosted by  
Women in Property

# #PIPbyWiP



**Suzannah Nichol MBE**



**Marie Macklin CBE**



**Karen Anderson**

## What can you expect?

Engaging speakers, inspiring presentations, challenging discussion and ample networking opportunities. On Wednesday 13th November, there will be informal 'fringe' dinners and drinks, great for those who are travelling from afar to mingle, meet old friends and make new connections. On 14th the Summit explores the theme 'Rethinking Places', with a great line-up of speakers, panels and workshops, all CPD accredited. We have already secured some fabulous speakers, with more to come:

- **Karen Anderson**,  
President Elect of the Royal Incorporation of Architects in Scotland
- **Jennifer Winyard**,  
National Chair of Women in Property
- **Suzannah Nichol MBE**,  
Chief Executive of Build UK
- **Marie Macklin CBE**,  
Founder and Executive Chair of HALO Urban Regeneration Company
- **Will Whitehorn**,  
President of UKSpace,  
Chair of Seraphim Space Investment Trust Fund PLC
- **Daisy Narayanan MBE**,  
Head of Placemaking and Mobility at City of Edinburgh Council
- **Stephen O'Malley**,  
CEO and Founding Director, Civic Engineers
- **Tony Hordon**,  
Managing Director, Parabola Real Estate
- **Kristina Tamane** BSc PG Cert MAPM,  
Space Sector Lead at University of Edinburgh
- **Stuart Fyvie**,  
Technical Director of FireArrow

## Panels:

**SPACE** – we'll be joined by Will Whitehorn, alongside a panel of guests, to discuss the Space Industry, the opportunities this sector presents as it intersects with property and construction and the impact that this sector may have on place across the country

### 20 Minute Neighbourhoods

– Join Jennifer Winyard in conversation with Daisy Narayanan, Stephen O'Malley and Tony Horden as they discuss the neighbourhoods they have each worked on with examples from Edinburgh, Glasgow and beyond

### Inspired by Outreach –

the opportunity to hear about the Women in Property schools outreach programme in Scotland delivered in partnership with McLaughlin & Harvey

## Panels, workshops and walking tours

We'll be running three panels, on SPACE, 20-minute neighbourhoods and Inspired by Outreach, as well as workshops covering topics as diverse as confidence in business development, assertiveness, Biodiversity Net Gain and the planning system. The walking tour will take in iconic buildings including the Scottish National Museum Extension and the Scottish Parliament building. Further details, as well as travel and accommodation tips can be found on the [website](#), and tickets can be booked via the App and Website. If you want to take your brain out of its comfort zone, enjoy socialising and relish a day or two in Edinburgh, this one is for you!





# The Regional Student Awards

## National Sponsors:



tp bennett

## Regional Sponsors:



The early summer months herald an exciting stage in the National Student Awards programme, when our branches celebrate the achievements of the regional finalists and announce the winning students who will go on to compete at the national final in September. This year 122 students participated in the Awards, representing 55 universities from across the country. Once again the judges were both inspired and humbled by the talent and professionalism of the contenders, and came away from their judging panels knowing that the future of the industry is in good hands. We would like to extend our thanks for the support of all our regional and national sponsors – your commitment to the Awards is very much appreciated and we genuinely wouldn't be able to run them without you.





# The 2024 National Finalists

**Central Scotland  
Phoebe  
Vendil,**  
MA Architecture,  
University of  
Edinburgh

**Central  
Scotland  
Caitlin  
Griffiths,**  
BSc Hons Architectural  
Studies, University  
of Strathclyde

**Midlands  
Zoe  
Baker,**  
Meng Civil Engineering,  
University of Warwick

**Midlands  
Annie  
Lattimore,**  
BSc Architectural  
Technology,  
Nottingham Trent

**Northern Scotland  
Rachael  
Livingstone,**  
Architecture,  
University of  
Dundee

**North West  
Letitia  
Zhao,**  
Architecture,  
Manchester School  
of Architecture

**South West  
Safa  
Al-Hamali,**  
BSc Hons Architecture,  
University of Bath

**South East  
Faith  
Egiadorah  
Omokhuale,**  
Meng Civil Engineering,  
University of  
Surrey

**South West  
Freya  
Killilea,**  
Meng Civil Engineering,  
University of Exeter

**South Wales  
Sophie  
Page,**  
BSc Architectural  
Studies,  
Cardiff  
University

**South East  
Eva  
Wright,**  
Urban Design Planning  
and Development,  
Oxford Brookes  
University

**Yorkshire &  
North East  
Ayesha  
Rauf,**  
Civil & Structural  
Engineering,  
University of  
Sheffield

**Yorkshire &  
North East  
Jess  
Pugh,**  
Architecture,  
University of  
Sheffield



# Inspiring future generations

Jennifer Winyard, National Chair



"The future of the built environment lies in the hands of children and young people who, very likely, have little idea of the fantastic careers scope it offers them, the creativity, variety and excitement ahead.

Now is the time to get their attention, inspire them with our own stories.

Maybe one day, they will be our engineers, architects, planners, surveyors...this is what Women in Property Outreach is all about.

Each of our branches has an Outreach representative, who works with other members to organise visits to schools and colleges in the area.

The age range varies, starting in primary school, and going right through to apprenticeships and University undergraduates.

Here is a snapshot of just some of the work Outreach volunteers do, from individual careers talks to academic-year-long programmes. If you come away feeling inspired and you'd like to hear more, contact Sue Maguire [partnerships@womeninproperty.org.uk](mailto:partnerships@womeninproperty.org.uk), who will be able to put you in touch with the right person in your area."





## Central Scotland Annual School Outreach Design Programme with Douglas Academy



From August 2023 to June 2024, 14 pupils in their 2nd year of secondary school (age 12 – 13) worked in small groups to design a £7m primary school. The pupils had one dedicated expert session per month from industry professionals representing architecture, structural engineering, sustainability, marketing, business development, employability, responsible business, building services, M&E, quantity surveying and planning.

At the end of the programme, pupils presented their final projects in front of their peers, parents and carers as well as the professionals who supported the programme. Pupils received a £10 Amazon voucher and certificate of excellence for taking part, and each group received Best Endeavours in categories such as innovation, collaboration, design and creativity and excelling in the interpretation of the brief.

Our thanks to McLaughlin & Harvey and East Dunbartonshire Council who lead a collaborative partnership/joint venture with us to deliver this fabulous project. Thank you too to volunteers from Reach And Hall, CDA Architects, Christie Gillespie, Curtains, Buro Happold, Stantec, PMP Project Management & Building Consultancy Ltd, HKA Global Ltd, Kier, Gardiner & Theobald and Baker Hicks

As a result of the programme, 71% of students said they would take part in the programme again and 50% of the students would now consider a career in the built environment.

## Highlands & Islands Nairn Academy Careers Fair



Women in Property took a table at this careers fair held at Nairn Academy, a State High School. It was open to all High School year groups, but with a focus on the 5th and 6th Years (Lower and Upper Six, in England and Wales). With representation from rural and commercial property solicitors, a rural surveyor, quantity surveyor and civil and structural engineer, volunteers talked to the students about careers across all sectors of the property industry, aided by handouts and an interactive measuring game.

Our grateful thanks to the employers who supported the Women in Property team in attending the event and providing materials, namely Pick Everard, Thorntons, Leadingham Chalmers, Highland Rural and Fairhurst.

## North West Jobs for Tomorrow Careers Talk



Thanks to Careers Connect for the invitation to talk to Year 10 students at St Julie's Catholic High School in Liverpool, where members presented to several classes about their job role, career journey and business and sector they work in, as well as potential careers in the built environment industry.

Thank you to Morgan Sindall and Fairhursts for their support. So far in 2024 Women in Property North West has supported over 400 students at Education Outreach events.

## Yorkshire & North East



A team of Women in Property volunteers held a series of sessions at Grimes Dyke Primary School in East Leeds. Pupils from years 4, 5, and 6 were guided by experts from organisations including Taylor Wimpey, Wates, Devonshires, William Saunders and Local Dialogue. They learnt about the different jobs on a construction site and, working in teams using the school's loose parts area, designed and built their own freestanding structures. These included pirate ships, rockets, office spaces, cars and gyms. Pupils were also able to quiz the professionals about their careers.

# Putting a face to a name

Women in Property holds over 500 events each year (issuing 3,183 CPD hours over 66 accredited events in the last financial year), thanks to members across the country giving their time and energy to organising them. As members, you have access to all of these, plus you can join our free Mentoring Programme, get involved in our Outreach and Inclusion activity, speak on panels and host events, submit blogs for our website and contribute to this newsletter, all while building friendships and developing your networks.

You might not be aware that, behind the scenes and working closely with National Team, our Executive Team is busy offering guidance, loading event details, managing the website and membership, developing partnerships with other organisations, coordinating the events programme and

running the webinars. This is also the finance 'hub' for Women in Property, handling payments, invoices and orders, so it's a hive of activity. Rather than just being a voice on the end of the phone, or name on an email signature, here are the people behind the Executive and Events Teams.

If you need to reach us, please visit [Contact Us](#) on the website.



**Lara Farey**  
Membership and Mentoring  
Administrator, events and  
website support



**Steph Hanley**  
Events team



**Melanie Jenks**  
Events team



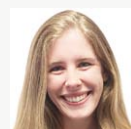
**Sue Maguire**  
Partnerships and Comms Lead



**Nicola Pay**  
Events team



**Sara Prince**  
Treasurer and events support,  
heads up Smart Admin



**Alice Pye**  
Awards Ambassador and  
events support

## In with the new

Jennifer Winyard MRICS MRTPI

**After an earlier election than predicted, we have a new Government. With growing anticipation in recent months, the feeling is now one of greater certainty amongst the business community and an air of optimism across our own industry. In particular, this focuses on the proposed planning reform and escalation in housing delivery, with its related infrastructure.**

In her first speech in the role, the first female Chancellor Rachel Reeves explained that the Labour government will reform the National Planning Policy Framework (NPPF) and promises a consultation to be published before the end of July. These amendments will include restoring mandatory housing targets for Local Authorities, with more social and affordable housing.

There will be a programme of New Towns and a 'brownfield first' (although not brownfield only) approach to delivery. We expect there to be

universal Local Plan coverage and reviews of Green Belt boundaries, which is something the private sector had been encouraging for some time. And, whilst exciting for the development scope it could bring, there is the need for further clarity on the much anticipated "grey belt" land definition which will hopefully be part of the strategy which will enable the country to meet the Government's 1.5M new homes target. It is also critical that it continues to collaborate



with the Property and Construction industry to ensure that the policies are fit for purpose and the industry can deliver effectively.

As per usual the devil will be in the detail, but that hasn't suppressed the industry positivity, at least for the time being.



# Winning with the App

Following a great response to the WiP App Prize Draw, we are pleased to announce the winner of the £100 John Lewis voucher, Sally Caveill of Wardell Armstrong in our South Wales Branch - congratulations to Sally and happy shopping! Don't forget, the Women in Property app is available for members to download. You can use the member search function, view and book events, as well as change your profile details and renew your membership. [Click here for download details.](#)



## LondonBuild

Once again, Women in Property is an official partner of London Build Expo, taking place 20-21 November at Olympia.

London Build Expo is the largest event for construction and design, and a great platform for women in the property industry to shine. Network with top professionals, discover cutting-edge innovations, and attend inspiring sessions led by leading figures in construction.

Empower your career, make invaluable connections, and be part of a community driving change in the construction world.

**Register now and take the next step in your professional journey!**



## #StepIntoSummer24

Congratulations everyone who strode out for #StepIntoSummer24. The teams were just short of the finish line, but collectively walked an amazing 38,728km in just two weeks which is an epic achievement. Thanks to everyone for taking part, engaging and supporting the charities, Smart Works and Women in Sport, and a huge thank you to our sponsors Stride Treglown, Fulkers Bailey Russell and Buro Happold.

Special congratulations to the winning teams, who are:

**1st**

**Tread Setters**  
801.7km

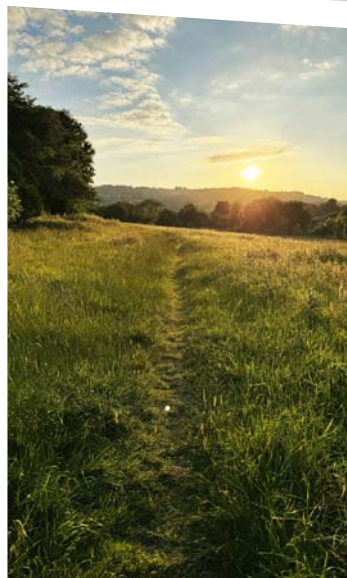
**2nd**

**ThreeSteppy**  
**ArchiSneakture**  
774.5km

**3rd**

**NW Walkaholics**  
762.7km

See you all again next year!





# Branch News



At a Confidence and Conflict session, **Central Scotland** members heard Actioncoach Yvonne Webb explain the limiting beliefs that many of us hold and the importance of developing mindset along with skillset, saying "The future will happen to us whether we plan for it or not. We get to decide if we steer our ship or be a passenger on someone else's".



The **Devon and Cornwall** committee hosted a Champagne Brunch at Cote Brasserie in Exeter, joined by a good mixture of members and non-members, regular attendees and some new faces too.



Members have also enjoyed a morning yoga session at Luna & Wolf in Exeter. The session focused heavily on stretching and breathing, ending with a few minutes of peaceful meditation before heading back to busy work schedules.



**Highlands & Islands** members and guests attended a wine tasting event at the Grapemonger, in Nairn. The evening had a fun and relaxed atmosphere which was perfect for building new, and developing existing, relationships. The evening included a game of 'guess the grape' with a bottle of fizz for the prize – which went to new member, Hazel Roe-Bose.

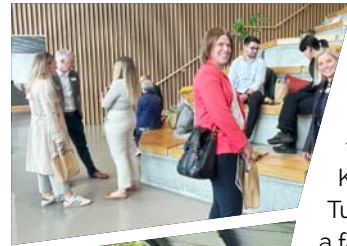


**Lancashire & Cumbria** held its summer social cruise on the beautiful Windermere, while enjoying the finest views of the Lakeland Fells. With refreshments and buffet snacks from locally sourced Lake District suppliers and musical entertainment, it was an evening to remember. Thank you Kingmoor Park, for sponsoring this event.



The **Midlands** branch has introduced a new series of netwalking events to supplement its existing wellbeing activity. In May, in recognition of Women's Health Month, they held the first in a series of netwalks in the beautiful Sutton Park. Then, in July, as part of the WiP Step into Summer Challenge, the Midlands committee Challenge

team were joined by other members, to explore the Birmingham canal network and take in some developments along the way.



ONE Life Sciences hosted **Northern Scotland** at its state of the art ONE BioHub facility, where Martin Jarvie from architects BDP and Ross Keillor from project managers Turner & Townsend provided a fascinating overview of the design evolution and delivery of the cutting edge triangular building, responding to the unique challenges of the site and delivering the facility on a tight footprint, alongside a large hospital complex, with 24-hour ambulance access throughout the COVID 19 pandemic.

Meanwhile, members and guests were out on the golf course at the Paul Lawrie Golf Centre, Aberdeen, where they enjoyed an hour's lesson with Senior PGA Instructor Andrew Locke. Improved swings all round!



**South East** members and guests enjoyed lunch at the Falak Royal in Ascot, before spending the afternoon at the 2024 Property Race Day. They had exclusive access to the Furlong Club Property Race Day Festival Lawn, where they enjoyed the racing, and live music into the evening.



The **South West** summer party was held on a beautiful sunny evening at Clifton Observatory, overlooking the Suspension Bridge. With a live band, charity fundraiser and magician it was a hugely popular, relaxed event. The branch is about to launch the Cheltenham and Gloucester satellite, and is busy planning the first event, scheduled for September.



**Thames Valley** hosted Afternoon Tea sponsored X-Press Legal Services at Cosener's House in Abingdon, on the banks of the River Thames. The sun came out and over 20 people had a great time catching up.



Over 80 property professionals attended the **Yorkshire & North East** summer party, in the beautiful setting of Cut and Craft in Leeds City Centre, a great place to enjoy some relaxed networking, and kindly sponsored by SLR.



# Success Stories



**Antonia D'Alessio** of Gilbert Stephens has been awarded Chartered Legal Executive of the year in the Devon and Somerset Law Society Awards



**Leanne Hill** has moved to Blackadders LLP as partner in the Commercial Property team



**Anne-Marie Eden** of Scanlans and **Rebecca Humes** of Savills have joined the Midlands committee



**Samantha Jevons** has been promoted to Senior Associate, Marketing and Business Development at Bowman Riley



**Amy Evans** of Penningtons Manches Cooper has been shortlisted for the NextGen of the Year, under 35 in the OxProp Awards



**Sam Johnson**, Social Value Manager at SES, has been shortlisted for the Lifetime Achievement Award in this year's Women in Construction Awards



Former Midlands Chair, **Hannah Floyd**, has celebrated her fourth year in business. Pi SQ, a Birmingham based, independent furniture consultancy, was incorporated in June 2020 and since its inception has worked on multi million pound developments for local councils, city councils, various NHS trusts and private sector clients



**Ashley Taylor-Watts** and team celebrated the sixth anniversary of Define Architects, the practice she established with her husband Gavin Watts.



**Jenn Foster** has been appointed by AM Sci Tech as Commercial Lettings Manager for Aberdeen Energy & Innovation Parks



Midlands Chair, **Jenny Wilkes**, has been promoted to Director at Trinity Property Consultants