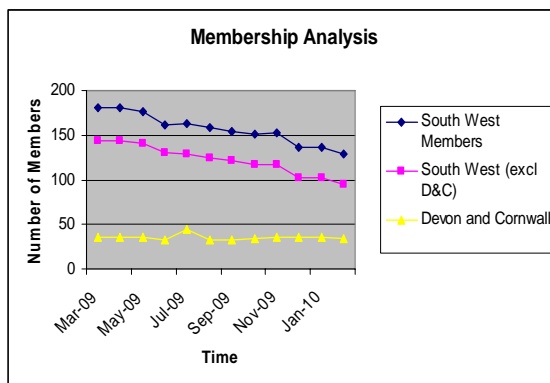


South West Branch Newsletter

19 strong committee for 2010

The new South West Branch committee was elected in February. I am pleased to report a very strong and resilient committee for the forthcoming year. This newsletter introduces you to some of the committee, others will feature in future editions.

The property market continues to face a tough year. We have seen many of our peers and colleagues face redundancy and uncertain times. This has affected the Branch and we have seen a decline in our membership and cutbacks in sponsorship. Below is an analysis to show what has happened to our membership and the challenge we have in 2010. We have to focus on driving membership.



However, more importantly there will be a huge focus on member needs. As a branch we hold a number of successful events throughout the year.

I am very keen to add value to the events. I am keen for you, as a member to show to your respective employer the advantages of being part of Women in Property. Therefore, my challenge to the committee is to look at as many events as possible where you, our member, can gain CPD points for attending. I am pleased to report that progress has already been made on this front. I am also very keen to have your feedback positive or negative, of what you would like to see us do more or less of and how we can help you.

Please keep an eye on the website for upcoming events. The next event is the Student Awards and Members drinks at Goldbrick House on Thursday 10 June.

I look forward to meeting you in the near future.

Sandy Sadhra – Chair SW Branch
sandy.sadhra@esporta.com

Who's who?

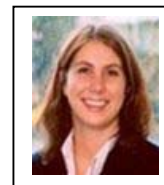
Sandy Sadhra
Chair
Contact Details: Esporta,
sandy.sadhra@esporta.com



Georgina Tibbs
Vice Chair
Contact Details: Barton Willmore LLP
georgina.tibbs@bartonwillmore.co.uk



Kate McLaughlin
Treasurer
Contact Details: Game Stores Group Ltd
gamestation.kate@yahoo.co.uk



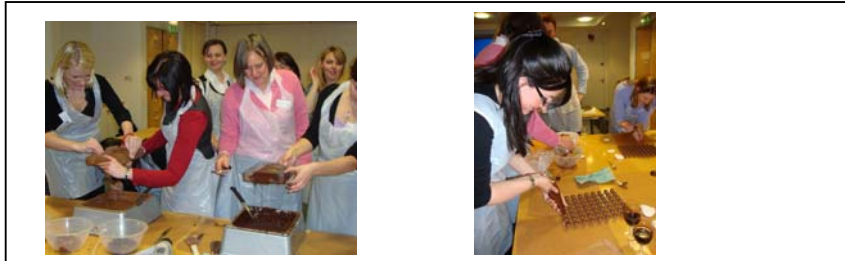
Amanda Greenslade
Membership Secretary
Contact: Bond Pearce LLP
amanda.greenslade@bondpearce.com



Jo Williams
Secretary
Contact Ridge & Partners LLP
jwilliams@ridge.co.uk



Chocolate Workshop



Clifton Cakes renowned for their chic chocolate shoe collection, treated members and their guests to an easter egg making and truffle filling workshop. The workshop included filling moulds to form the chocolate shell and the flavouring of truffles with liquers. All enjoyed the event, which was very hands on and each attendee got to take home with them an Easter egg filled with hand made truffles. The relaxed fun environment, was perfect for meeting new contacts and those attended are sure to agree the chocolate was delicious. Thank you to Burges Salmon LLP for hosting and sponsoring the event.

Hengrove Site Visit



A full complement of 18 members and guests enjoyed a special preview tour of the £23m South Bristol Skills Academy, which Cowlin is due to hand over shortly to the City of Bristol College.

The South Bristol Skills Academy is a major part of the wider regeneration of south Bristol and a key component in the drive to improve standards of education and the levels of skills across the city. At the heart of the 11,000 sq m building is the 'Winter Garden and Terraces', a series of central interactive flexible spaces which come together to create a vibrant hub for the college - a place to meet, work and socialise.

Thank you to Cowlin for hosting and sponsoring this event.

Careers for Girls

The South West branch attend careers sessions and assist with mock interviews at local secondary schools and colleges. The sessions are rewarding and provide an insight to students on the careers available in property and construction post education. The next mock interview session is at Colston's Girls School on Tuesday 22 June. If you would like to help at this vent or future education projects, please contact: Naomi Evans - NEvans@VWV.CO.UK

Vicki Redman
Bond Pearce LLP
Past Chairman 2009/10
victoria.redman@bondpearce.com



Kelly Newlands
Hyder Consulting (UK) Ltd
Events Secretary
kelly.newlands@hyderconsulting.com



Events Calendar

Forthcoming South West Branch Events:

Members Drinks and Student Awards

Goldbrick House
Thursday 10 June – 6.00 pm

Schools Interviews

Colston's Girls School
Tuesday 22 June
9.15 am – 3.00 pm

Site Visit

Weston-super-Mare Pier
21 June 2010
5.30 pm

Gliding Evening

Hullavington Airfield
July TBC

Race Evening

Bath Racecourse
Thursday 5 August

Networking Lunch

Venue TBC
Wednesday 18 August

www.wipnet.org for information